

BT44RT BOOM LIFT

137FT DIESEL BOOM LIFT TELESCOPIC

| Dimension | Metric | British |
|---|---------------|---------------|
| Max. Working Height | 44.00m | 144ft 4in |
| Max. Platform Height | 42.00m | 137ft 10in |
| Max. Operating Range(Unrestricted/Restricted) | 26.20m/24.00m | 86ft/78ft 9in |
| Max. Platform Range(Unrestricted/Restricted) | 25.60m/23.40m | 84ft/76ft 9in |
| Max. Down Probing Depth | 2.00m | 6ft 7in |
| Overall Length(Stowed) | 17.00m | 55ft 9in |
| Overall Length(Transport) A | 11.93m | 39ft 2in |
| Overall Width(Axle Expanded) | 4.15m | 13ft 7in |
| Overall Width(Axle Retracted) B | 2.45m | 8ft |
| Overall Width(Transport) | 2.29m | 7ft 6in |
| Overall Height(Stowed) C | 2.82m | 9ft 3in |
| Overall Height(Transport) | 2.55m | 8ft 4in |
| Jib Length | 4.20m | 13ft 9in |
| Platform Size(Length×Width) | 2.44m×0.90m | 8ft×2ft 11in |
| Platform Height | 1.10m | 3ft 7in |
| Turntable Tailswing | 1.39m | 4ft 7in |
| Ground Clearance | 0.38m | 1ft 3in |
| Wheelbase(Axle Expanded) | 4.07m | 13ft 4in |
| Wheelbase(Axle Retracted) D | 4.30m | 14ft 1in |

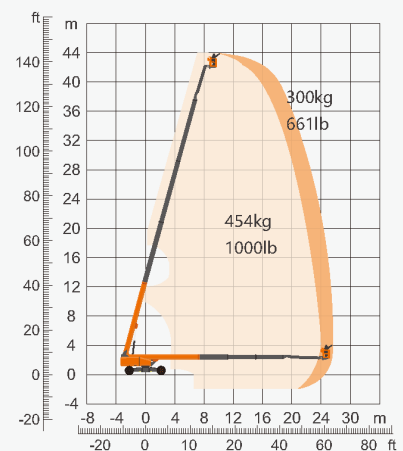
| Performance | Metric | British |
|---------------------------------|----------------|------------------|
| S.W.L.(Unrestricted/Restricted) | 300kg/454kg | 661lb/1000lb |
| Max. Occupants | 3 | 3 |
| Gradeability | 45% | 45% |
| Travel Speed(Stowed) | 5.0km/h | 3.11mph |
| Travel Speed(Raised) | 0.8km/h | 0.50mph |
| Max. Working Slope | 5° | 5° |
| Turret Rotation | 360°Continuous | 360°Continuous |
| Platform Rotation | 180° | 180° |
| Jib Movement | 240° | 240° |
| Main Boom Maximum Angle | 75° | 75° |
| Turning Radius(Inside/Outside) | 2.45m/6.2m | 8ft 3in/20ft 4in |
| Tyres | 445/50-D710 | 445/50-D710 |

| Weight | Metric | British |
|----------------|---------|---------|
| Overall Weight | 22000kg | 48501lb |

| Power | Metric | British |
|--------------------------------|------------|------------|
| Emergency Power System | 12V/110A×2 | 12V/110A×2 |
| Diesel Engine - Deutz TD2.9 L4 | 55.4kW | 55.4kW |
| Diesel Tank | 140L | 36gal |
| Hydraulic Tank | 150L | 39gal |



ENGINE



Range Of Motion

