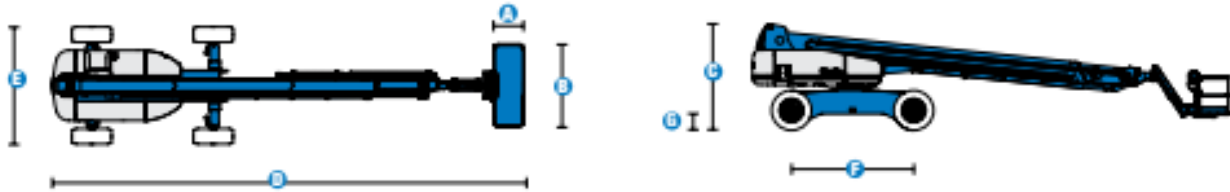
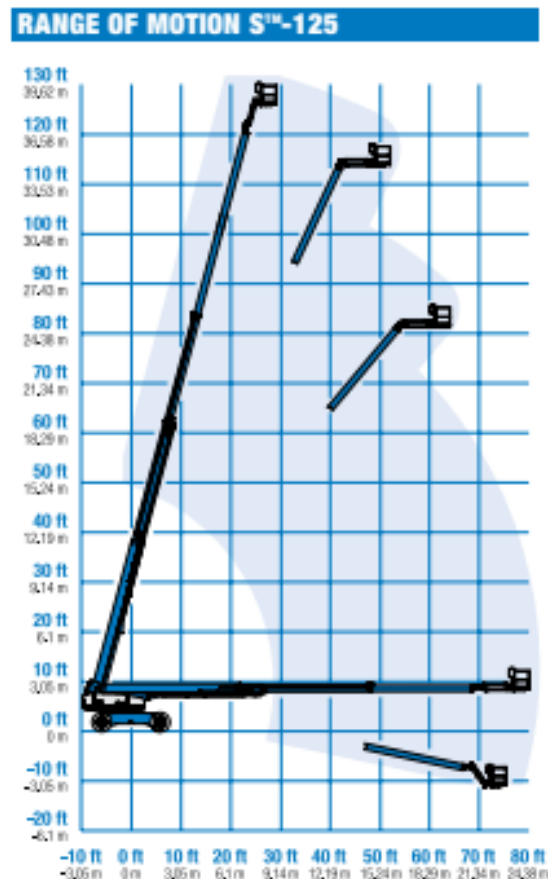


## S125 BOOM LIFT

125FT DIESEL BOOM LIFT TELESCOPIC



MODEL		S™-125	
MEASUREMENTS		Metric	US
Working height maximum*		40.15 m	131 ft 2 in
Platform height maximum		38.15 m	125 ft 2 in
Horizontal reach maximum		24.38 m	80 ft
Below ground reach		3.27 m	10 ft 9 in
A Platform length		0.91 m	3 ft
B Platform width		2.44 m	8 ft
C Height - stowed		3.07 m	10 ft 1 in
D Length - stowed		14.25 m	46 ft 9 in
Length - transport (jib lucked under)		12.17 m	39 ft 11 in
E Width - axles retracted		2.49 m	8 ft 2 in
Width - axles extended		3.35 m	11 ft
F Wheelbase		3.66 m	12 ft
G Ground clearance - centre		0.44 m	1 ft 5.5 in
PRODUCTIVITY			
Lift capacity		227 kg	500 lbs
Platform rotation		160°	160°
Vertical jib rotation		135°	135°
Turntable rotation		360° continuous	
Turntable tailswing - axle retracted		1.68 m	5 ft 6 in
Turntable tailswing - axle extended		1.24 m	4 ft 1 in
Drive speed - stowed		4.8 km/h	3.0 mph
Drive speed - raised/extended below 80 ft		1.1 km/h	0.68 mph
Drive speed - raised/extended above 80 ft		0.55 km/h	0.34 mph
Gradeability - stowed**		40%	40%
Turning radius - axle retracted: inside		4.01 m	13 ft 2 in
Turning radius - axle retracted: outside		6.75 m	22 ft 2 in
Turning radius - axle extended: inside		2.59 m	8 ft 6 in
Turning radius - axle extended: outside		5.74 m	18 ft 10 in
Controls		12V DC proportional	
Tyres - RT lug - Foam filled		445/65 D22.5	
POWER			



## S125 BOOM LIFT

125FT DIESEL BOOM LIFT TELESCOPIC



### STANDARD FEATURES

#### MEASUREMENTS

##### S™-125

- 40.15 m (131 ft 2 in) working height
- 24.38 m (80 ft) horizontal reach
- 227 kg (500 lbs) lift capacity

#### PRODUCTIVITY

- 2.44 m (8 ft) steel platform
- 1.52 m (5 ft) jib boom with 135° working range
- 4WD
- 4WS
- Extendable axles
- Rough terrain foam-filled tyres
- Self-leveling platform
- Hydraulic platform rotation
- Fully proportional Hall effect joystick controls
- Hydraulic oil cooler
- Drive enable
- Horn
- Hour meter
- Tilt alarm
- Descent alarm
- Motion alarm
- 360° continuous turntable rotation
- Locking turntable covers
- Positive traction drive
- Two speed wheel motors
- Configurable controls to limit maximum height to 24.38 m (80 ft) or 30.48 m (100 ft)
- Ground control box cover
- Engine status display
- Thumb rocker steer
- Dual flashing beacons

#### POWER

- 12 V DC auxiliary power
- Deutz turbo diesel 55 kW (74 hp)
- Anti-restart engine protection
- Auto engine fault shutdown

### OPTIONS & ACCESSORIES

#### PRODUCTIVITY

- Platform swing gate
- Half mesh platform inserts with swing gate
- Platform top auxiliary rail
- Air line to platform
- Fire resistant hydraulic oil
- Biodegradable hydraulic oil
- Basic hostile environment kit
- Deluxe hostile environment kit
- Deluxe aircraft protection package (6 ft platform only)
- Tool tray
- Fluorescent tube caddy
- Platform work lights
- Front driving lights
- Lockable platform control box covers
- 1.83 m (6 ft) steel platform

#### POWER OPTIONS

- 240 V power to platform
- 7 kVA hydraulic generator (240 V/50 Hz)
- Cold Weather Packages
- Diesel scrubber/spark arrestor muffler
- Retained key selector switch

