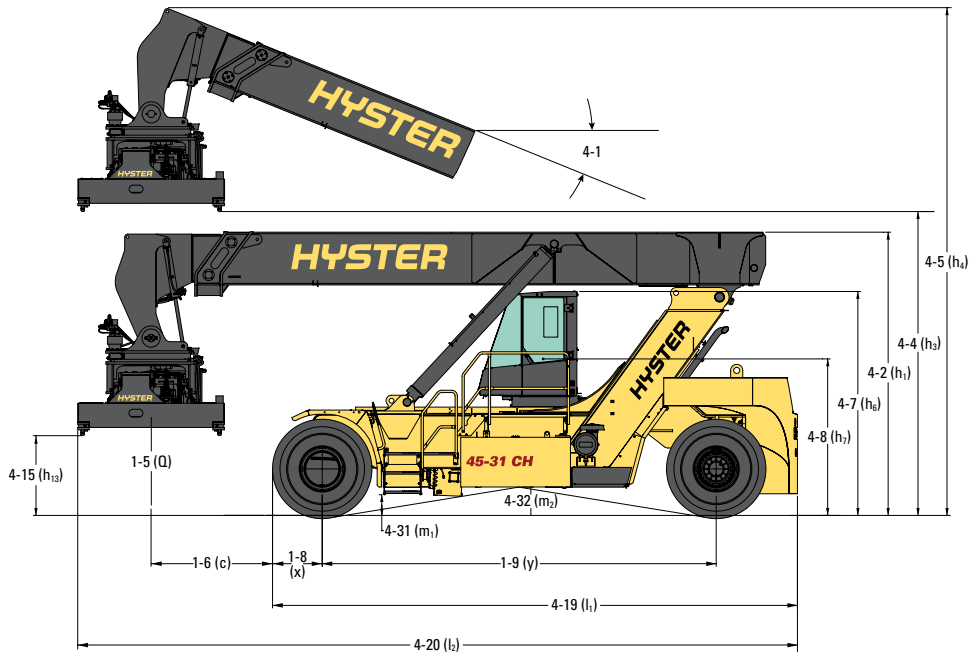


RS45-27 CH FORKLIFT

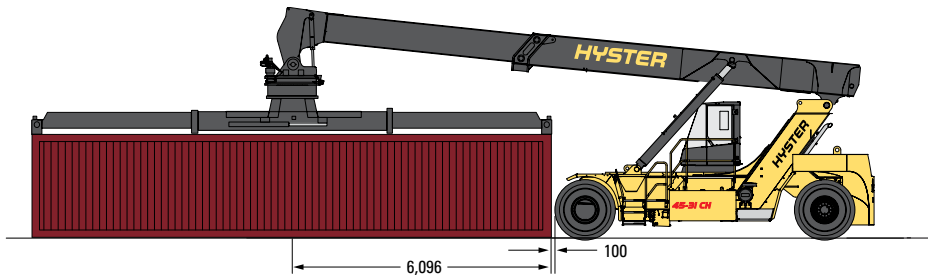
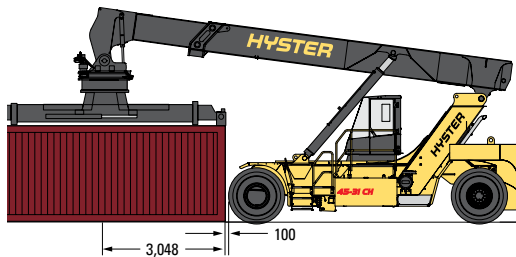
45.0T DIESEL 4.3M CONTAINER HANDLER



DIMENSIONS



MAXIMUM CAPACITY CONTAINER PICKING END TO END		
MODEL	20'	40'
	kg	kg
RS45-27	31,000	12,300
RS45-31	34,000	15,000



RS45-27 CH FORKLIFT

45.0T DIESEL 4.3M CONTAINER HANDLER



RS 45-27, RS 45-31 CONTAINER HANDLERS

		HYSTER						
		RS45-27CH (A921)		RS45-31CH (A921)				
GENERAL	1.1	Manufacturer	HYSTER					
	1.2	Model designation	RS45-27CH (A921)		RS45-31CH (A921)			
	1.3	Powertrain / drivetrain	Diesel					
	1.4	Operator type	Seated					
	1.5.1	Load capacity at load centre distance c_1	Q_1	kg	45,000			
	1.5.2	Load capacity at load centre distance c_2	Q_2	kg	27,000	31,000		
	1.5.3	Load capacity at load centre distance c_3	Q_3	kg	12,300	15,000		
	1.6.1	Load centre distance c_1 (1)	c_1	mm	1,565			
	1.6.2	Load centre distance c_2 (1)	c_2	mm	3,815			
	1.6.3	Load centre distance c_3 (1)	c_3	mm	6,315			
WEIGHT	1.8	Load distance	x	mm	835			
	1.9	Wheelbase	y	mm	6,500			
	1.10	Stacking height at first row (number x container height)	#	5 x 9' 6"				
WEIGHT	2.1	Service weight		kg	62,300	65,300		
	2.2.1	Axle loading with load, front / rear at c_1		kg	93,000	14,300	92,800	17,500
	2.3.1	Axle loading without load, front / rear at c_1		kg	31,400	30,900	31,200	34,100
WHEELS	3.1	Tyre type front/rear	Pneumatic					
	3.2	Tyre size, front	18.00-25 40PR					
	3.3	Tyre size, rear	18.00-25 40PR					
	3.5	Number of wheels, front / rear (x = driven wheels)	x4 / 2					
	3.6	Tread, front	b_{10}	mm	3,703			
DIMENSIONS	3.7	Tread, rear	b_{11}	mm	3,060			
	4.1	Boom angle minimum / maximum		degrees	0 / 59			
	4.2	Height of boom lowered	h_1	mm	4,700			
	4.4.1	Lift height at load centre c_1 (2)	$h_{3,1}$	mm	15,080			
	4.4.2	Lift height at load centre c_2 (2)	$h_{3,2}$	mm	13,470			
	4.4.3	Lift height at load centre c_3 (2)	$h_{3,3}$	mm	10,320			
	4.5	Height, boom extended	h_4	mm	18,110			
	4.7	Height of overhead guard (cabin)	h_6	mm	3,720			
	4.8	Seat height to SIP (3)	h_7	mm	2,555			
	4.15	Height under twistlock - lowered (2)	h_{13}	mm	1,275			
	4.19	Overall length	l_1	mm	8,660			
	4.20	Overall length including boom retracted	l_2	mm	11,875			
	4.21.2	Overall width across all of truck	b_2	mm	4,200			
	4.21.3	Overall width across spreader 20°	$b_{1,20}$	mm	6,100			
	4.21.4	Overall width across spreader 40°	$b_{1,40}$	mm	12,200			
	4.28	Reach distance	l_4	mm	4,310			
	4.31	Ground clearance, lowest point	m_1	mm	285			
	4.32	Ground clearance, centre or wheelbase	m_2	mm	437			
	4.34.3	Aisle width: 20° container, reduced / full stroke (4)	Ast_{20}	mm	12,520 / 11,950			
4.34.4	Aisle width: 40° container, reduced / full stroke (4)	Ast_{40}	mm	14,040 / 13,830				
4.35	Outside turning radius, reduced / full stroke	W_3	mm	8,990 / 8,450				
4.36	Internal turning radius, reduced / full stroke	b_{13}	mm	1,620 / 1,040				
PERFORMANCE	5.1	Travel speed with / without load		km/h	20 / 23			
	5.2	Lifting speed with / without load		m/s	0.24 / 0.41			
	5.3	Lowering speed with / without load		m/s	0.45 / 0.45			
	5.4.1	Telescoping speed 20° - 40°		sec	9			
	5.5	Drawbar pull - 1 mph (1.6 km/h) with / without load		kN	308	316	305	313
5.7	Gradeability - 1 mph (1.6 km/h) with / without load (5)		%	24	38	23	36	

(1) From face of front tyres

(2) With Mechanical Pile Slope (MPS). For optional Powered Pile Slope (PPS) function: deduct 310 mm

(3) Full suspension seat in depressed position

(4) Spreader at 8.0 m high, central above front axle; container 0mm in front of tyres; includes 2 x 100 mm clearance; full/reduced stroke steer cylinder

(5) Gradeability figures are provided for comparison of tractive performance, but are not intended to endorse the operation of vehicle on the stated inclines.