

## TURBOFARMER 30.9 - 100 EE TELEHANDLER

3.0T DIESEL 10.0M TELEHANDLER



	PERFORMANCE AND FEATURES	TF30.9-100 EE		
	<b>PERFORMANCE</b>			
	Total unladen weight (kg)	6650		
	Maximum capacity (kg)	3000		
	Lifting height (m)	8,3		
	Maximum reach (m)	5,8		
	Maximum operating height (m)	4,8		
	Maximum operating reach (m)	1,6		
	Capacity at maximum height (kg)	1100		
	Capacity at maximum reach (kg)	550		
	Lateral boom movement (mm)	-		
	Tilting correction (%)	-		
	Boom sections	3		
	<b>POWERTRAIN</b>			
	Turbo motor	Kubota V3800		
	Displacement/cylinders	3800/4		
	Engine Power (kW/HP)	74/100		
	Anti-pollution technology	TIER 3, STAGE IIIA		
	Reversible fan	●		
	Maximum speed (km/h)	40		
	Fuel tank (l)	80		
	AdBlue tank (l)	-		
	Hydrostatic transmission	● - 2V		
	EPD	-		
	Axles	Axial		
Reduction hub	Epicyclic			
Machine brakes	Dry discs			
Automatic parking brake	●			
	<b>HYDRAULIC</b>			
	Hydraulic pump	LS+FS		
	Flow rate/pressure (l/min - bar)	140-210		
	Hydraulic tank	85		
	Hydraulic outlet at the top of the boom	●		
	Rear hydraulic outlets	○		
	<b>CAB</b>			
	Cab configuration	ECO		
	MCDC	Complet		
	FOPS LIV II cab	●		
	ROPS cab	●		
	Cab commands	Electronic joystick		
	Tilting Cab	-		
Reverse shuttle	Dual reverse			
	<b>CONFIGURATION</b>			
	Cab suspension	-		
	Boom suspension	●		
	Suspension on axles	-		
	Work headlights on cab	●		
	Sun blind	●		
	Tac-lock	●		
	Provision for a platform	○		
	Two floating forks	●		
	Inching-Control	●		
	Four-wheel drive	●		
	Four-wheel steering	●		
	Three steering modes	●		
	Standard tyres	400/70-20		
	Optional tyres	-		
	Stabilisers	-		
	Turret rotation	-		
Type approval as an agricultural tractor	-			
Approval with PNEUMATIC braking	-			
Approval with HYDRAULIC braking	-			
PTO	-			
3-point linkage	-			

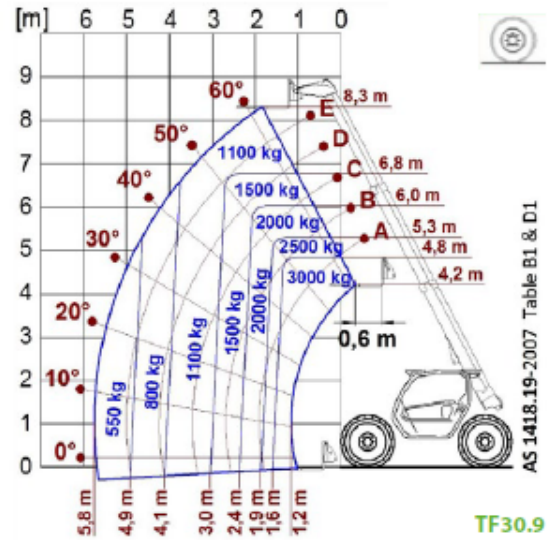
- Not Available. ● standard. ○ optional.

## TURBOFARMER 30.9 - 100 EE TELEHANDLER

3.0T DIESEL 10.0M TELEHANDLER



### LOAD CHARTS



### DIMENSIONS

	TF30.9 100 EE		
A (mm)	4330		
B (mm)	990		
C (mm)	2740		
D (mm)	600		
E (mm)	3910		
F (mm)	340 (300 L)		
H (mm)	2100		
M (mm)	995		
P (mm)	2120 (2020 L)		
R (mm)	3930		
S (mm)	4660		
Z (mm)	850		

