

PANORAMIC 27.6 TELEHANDLER

2.7T DIESEL 6.0M TELEHANDLER



	PERFORMANCE AND FEATURES	P27.6AU		
	PERFORMANCE			
	Total unladen weight (kg)	4850		
	Maximum capacity (kg)	2500		
	Lifting height (m)	5,9		
	Maximum reach (m)	3,3		
	Maximum operating height (m)	4,5		
	Maximum operating reach (m)	1,2		
	Capacity at maximum height (kg)	1500		
	Capacity at maximum reach (kg)	900		
	Lateral boom movement (mm)	-		
Tilting correction (%)	-			
Boom sections	2			
	POWERTRAIN			
	Turbo motor	Kubota V3307		
	Displacement/cylinders	3300/4		
	Engine Power (kW/HP)	55,4/75		
	Anti-pollution technology	EURO III		
	Reversible fan	-		
	Maximum speed (km/h)	40		
	Fuel tank (l)	70		
	AdBlue tank (l)	-		
	Hydrostatic transmission	● - 1V		
	EPD	-		
	Axles	Axial		
	Reduction hub	Epicyclic		
Machine brakes	Dry discs			
Automatic parking brake	●			
	HYDRAULIC			
	Hydraulic pump	Gear		
	Flow rate/pressure (l/min - bar)	94-210		
	Hydraulic tank	70		
	Hydraulic outlet at the top of the boom	●		
Rear hydraulic outlets	○			
	CAB			
	Cab configuration	ECO		
	MCDC	●		
	FOPS LIV II cab	●		
	ROPS cab	●		
	Cab commands	Electromechanical joystick		
	Tilting Cab	-		
Reverse shuttle	Finger touch			
	CONFIGURATION			
	Cab suspension	-		
	Boom suspension	○		
	Suspension on axles	-		
	Work headlights on cab	○		
	Sun blind	○		
	Tac-lock	●		
	Provision for a platform	○		
	Two floating forks	●		
	Inching-Control	●		
	Four-wheel drive	●		
	Four-wheel steering	●		
	Three steering modes	●		
	Standard tyres	12,0/75-18"		
	Optional tyres	-		
	Stabilisers	-		
	Turret rotation	-		
Type approval as an agricultural tractor	-			
Approval with PNEUMATIC braking	-			
Approval with HYDRAULIC braking	-			
PTO	-			
3-point linkage	-			
	DIMENSION			
	Width (mm)	1840		
	Height (mm)	2000		
	Length (mm)	3910		
	Wheelbase (mm)	2450		

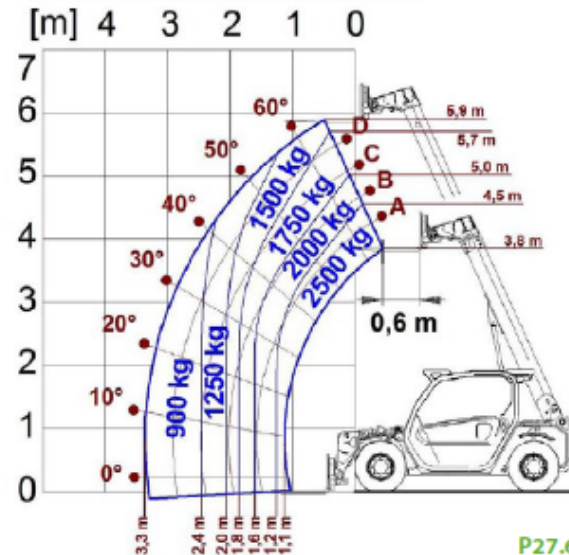
- Not Available. ● standard. ○ optional.

PANORAMIC 27.6 TELEHANDLER

2.7T DIESEL 6.0M TELEHANDLER



LOAD CHARTS



GLOSSAR

SCR	Selective Catalyst Reduction , solution used for the reduction of NOx in the exhaust gases through the injection of a liquid - UREA (AdBlue) - into the exhaust gases.
DPF	Diesel Particulate Filter , a solution used to reduce fine particle emissions in exhaust gases
DOC	Diesel Oxidation Catalyst , a solution used to reduce carbon monoxide (CO) and hydrocarbons in exhaust gases
EGR	Exhaust Gas Recirculation , a solution used to reduce NOx in exhaust gases by recirculating gas inside the combustion chamber of the engine.
1-2V	1 or 2 speed Merlo gearbox
CVTronic	Continuous variation Merlo gearbox , for constant acceleration without loss of torque
EPD	Eco Power Drive , Merlo electronically-controlled hydrostatic transmission Electronic, enables effective RPM management in order to reduce overall fuel consumption by the machine
EPD Plus	In addition to the EPD Control , it is also possible to work using Speed Control (maintaining a constant travel speed) and Heavy Load (management of RPM in order to maximise performance for tasks such as: bucketing operations, heavy duty unloading, etc.)
EPD Top	In addition to the EPD Plus control function, this enables the RPM to be managed directly using the joystick
Gear	Fixed displacement pump with gears , combined with an open centre hydraulic distributor
LS	Variable displacement pump with Load Sensing control, combined with a closed centre hydraulic distributor
LS+FS	Variable displacement pump with Load Sensing control, combined with a closed centre hydraulic distributor equipped with solenoid valves and Flow Sharing control.
Kabine ECO/PREMIUM	MODULAR type cabin with simplified or PREMIUM equipment
MCDC	Merlo Dynamic Load Control, electronic control of the machine's anti-overturn system. • Light : Simplified version; • Complete : Version with display in cab.
FOPS	Falling object protective structure, the system which shields the operator from heavy objects falling onto the cab. Two levels: • FOPS Liv I : Object with a weight of 45 kg falling from 3 metres • FOPS Liv II : Object with a weight of 227 kg falling from 5.2 metres
ROPS	Roll-over protection system (or roll-over protection structure), the system that protects the operator if the vehicle rolls over
Finger Touch	Driving direction inversion system mounted on the steering column
Dual Reverse	Dual driving direction inversion system, on both the steering column and the joystick
Tac-lock	Hydraulic attachment clamping system controlled from the cab