

PANORAMIC 72.10 EE TELEHANDLER

7.2T DIESEL 10.0M TELEHANDLER



	PERFORMANCE AND FEATURES	P72.10 EE		
	PERFORMANCE			
	Total unladen weight (kg)	11300		
	Maximum capacity (kg)	7200		
	Lifting height (m)	9,2		
	Maximum reach (m)	5,2		
	Maximum operating height (m)	6		
	Maximum operating reach (m)	1,5		
	Capacity at maximum height (kg)	2750		
	Capacity at maximum reach (kg)	1800		
	Lateral boom movement (mm)	± 250		
	Tilting correction (%)	± 8		
	Boom sections	2		
		POWERTRAIN		
Turbo motor		Kubota V3800		
Displacement/cylinders		3800/4		
Engine Power (kW/HP)		74/100		
Anti-pollution technology		TIER 3, STAGE IIIA		
Reversible fan		-		
Maximum speed (km/h)		40		
Fuel tank (l)		140		
AdBlue tank (l)		-		
Hydrostatic transmission		● - 2V		
EPD		-		
Axles		Drop portal		
Reduction hub		RR700		
Machine brakes	Dry discs			
Automatic parking brake	●			
	HYDRAULIC			
	Hydraulic pump	LS		
	Flow rate/pressure (l/min – bar)	104 - 250		
	Hydraulic tank	100		
	Hydraulic outlet at the top of the boom	●		
	Rear hydraulic outlets	○		
	CAB			
	Cab configuration	ECO		
	ASCS	Complet		
	FOPS LIV II cab	●		
	ROPS cab	●		
	Cab commands	Electronic joystick		
	Tilting Cab	-		
Reverse shuttle	Dual reverse			
	CONFIGURATION			
	Cab suspension	-		
	Boom suspension	-		
	Suspension on axles	-		
	Work headlights on cab	●		
	Sun blind	●		
	Tac-lock	●		
	Provision for a platform	○		
	Two floating forks	●		
	Inching-Control	●		
	Four-wheel drive	●		
	Four-wheel steering	●		
	Three steering modes	●		
	Standard tyres	400/70-24		
	Optional tyres	-		
	Stabilisers	-		
	Turret rotation	-		
	Type approval as an agricultural tractor	-		
	Approval with PNEUMATIC braking	-		
	Approval with HYDRAULIC braking	-		
PTO	-			
3-point linkage	-			

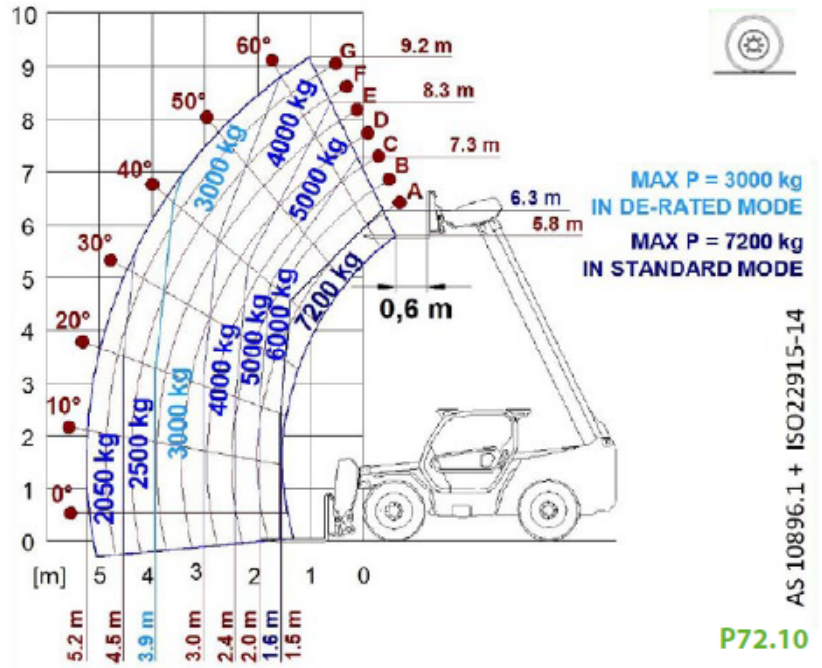
- Not Available. ● standard. ○ optional.

PANORAMIC 72.10 EE TELEHANDLER

7.2T DIESEL 10.0M TELEHANDLER



LOAD CHARTS



DIMENSIONS

	P72.10 EE		
A (mm)	5480		
B (mm)	1255		
C (mm)	2920		
D (mm)	1304		
E (mm)	4815		
F (mm)	450		
H (mm)	2240		
L (mm)	-		
M (mm)	1010		
P (mm)	2500		
R (mm)	3970		
S (mm)	4990		

