

## ZX135/70 BOOM LIFT

### 135FT DIESEL ARTICULATING BOOM LIFT



Model	ZX-135/70	
<b>Measurements</b>	<b>Metric</b>	<b>US</b>
Working height maximum*	43.15 m	141 ft
Platform height maximum	41.15 m	135 ft
Horizontal reach max - riser extended	18.03 m	59 ft 2 in
Horizontal reach max - riser retracted	21.26 m	69 ft 9 in
Up and over clearance maximum -		
riser extended	23.01 m	75 ft 6 in
riser retracted	9.91 m	32 ft 6 in
Below ground reach	5.87 m	19 ft 3 in
<b>A</b> Platform length	0.91 m	3 ft
<b>B</b> Platform width	2.44 m	8 ft
<b>C</b> Height - stowed	3.07 m	10 ft 1 in
<b>D</b> Length - stowed	12.93 m	42 ft 5 in
<b>E</b> Width - axles extended	5.03 m	16 ft 6 in
Width - axles retracted	2.49 m	8 ft 2 in
<b>F</b> Wheelbase - axles extended	4.72 m	15 ft 6 in
Wheelbase - axles retracted	5.03 m	16 ft 6 in
<b>G</b> Ground clearance - center	0.38 m	1 ft 3 in

#### Productivity

Lift capacity	272 kg	600 lbs
Platform rotation	160°	
Vertical jib rotation	110°	
Turntable rotation	360° continuous	
Turntable tailswing - axles extended riser up	0.79 m	2 ft 7 in
Turntable tailswing - riser down	4.27 m	14 ft
Drive speed - stowed	4.5 km/h	2.8 mph
Drive speed - raised	1.1 km/h	0.7 mph
Lift speed to full height	96 sec	
Gradeability - stowed**	45%	
Inside turning radius - axles extended	3.02 m	9 ft 11 in
Inside turning radius - axles retracted	6.27 m	20 ft 7 in
Outside turning radius - axles extended	7.34 m	24 ft 1 in
Outside turning radius - axles retracted	8.56 m	28 ft 1 in
Controls	12 V DC proportional	
Tyres	445D50/710 18 ply foam-filled	

#### Power

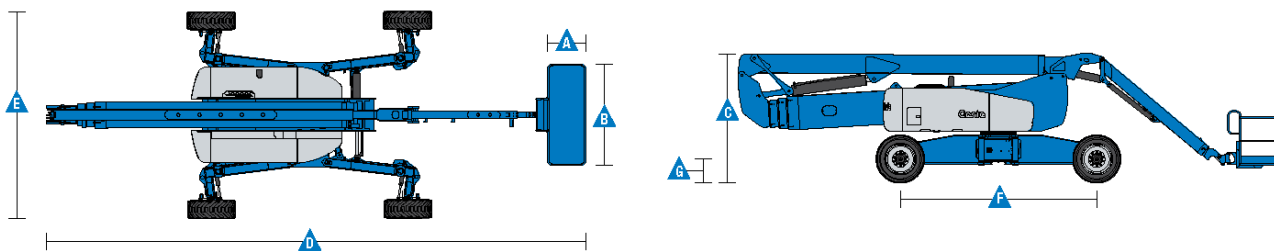
Power source	Deutz Diesel TD 2011 L04i 4-cylinder turbo diesel, 74 hp (55 kW)	
Auxiliary power unit	12 V DC	
Hydraulic tank capacity	246.1 L	65 gal
Fuel tank capacity	151.4 L	40 gal

#### Weight\*\*\*

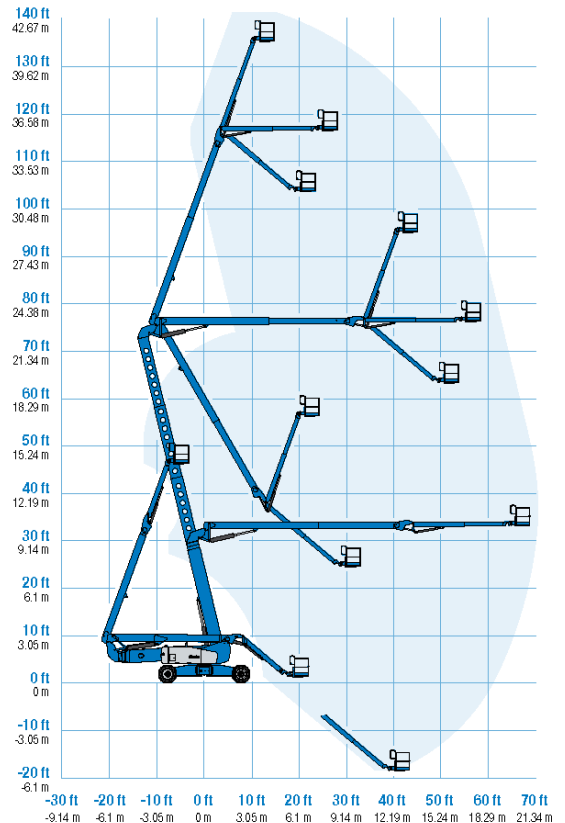
	20,267 kg	44,681 lbs
--	-----------	------------

#### Standards Compliance

AS 1418.10



#### Range Of Motion ZX-135/70



\* The metric equivalent of working height adds 2 m to platform height. U.S. adds 6 ft to platform height.  
 \*\* Gradeability applies to driving on slopes. See operator's manual for details regarding slope ratings.  
 \*\*\* Weight will vary depending on options and/or country standards.