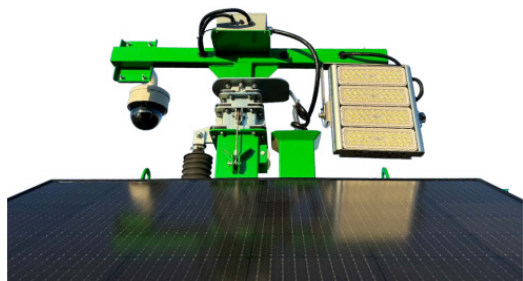


SOLAR SECURITY LIGHTING TOWER



CCTV ECO GP28K

GENERAL

Model	CCTV ECO-GP28k
Lumen Output	28,000
Mast Height	25 Feet
Mast Type	Hydraulic/Cable
Lights	1 x 200w LED Modules
Trailer Type	Single Axle
Tyre and Rim Size	215/70R15
Stabiliser Supports	4 x Manual
Mudguard / Wheel Chock	Included
Features	Folding Drawbar, 7 day Timer/ Day Night modes, Fire Extinguisher, Emergency Stop, Battery Isolator, Adjustable Solar Tilt, Security wheel nuts, AC Charger

OPERATIONAL DATA

Wind Rating	60mph
Working Temperature	32°F to 122°F

BATTERY

Battery	10.8kWh Deep Cycle Gel
Runtime	30 Hours
Solar	1.23kWp
Solar Tilt	30° to 45°
Efficiency (solar)	1 hour of sun/3 hours of light

UNIT

Dimensions (Towing)	124" x 59" x 114" (LxWxH)
Dimensions (Deployed)	87" x 136" x 301" (LxWxH)
Dimensions (Stowed)	87" x 59" x 114" (LxWxH)
Weight	3086 lbs

GENERAL

Camera Quality	1x 4MP 25x PTZ
Lens	1x 4.8 to 120mm Adjustable Focal
Recording Time	4 weeks continuous recording on 4TB Hard Drive
Monitoring	Phone App or PC/Cloud
Features	Scheduled recordings, Email/ App alerts, Movement/Smart event Detection, false alarm reduction/vehicle-person recognition

